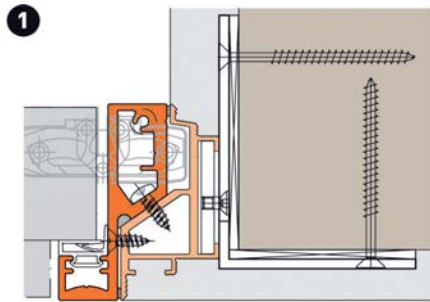


Installation options

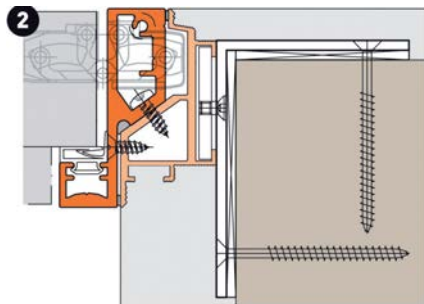
The adaptability of the CHORWO does not only apply to the interior design of a wall as such, but also for the texture. Due to the Sophisticated technology of the CHORWO frame it can be installed in masonry as well as in drywalls.

Solid wall

1. Fold-flush, opening in the soffit

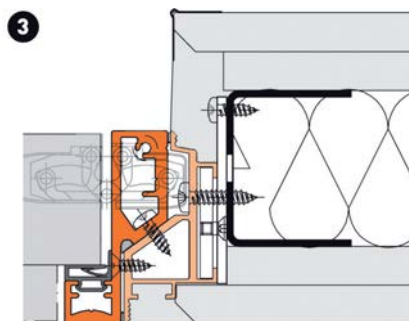


2. Flush with the fold, conventional opening

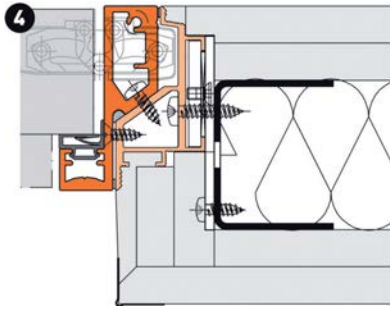


Lightweight wall

3. Folds flush with each other, opening in the soffit

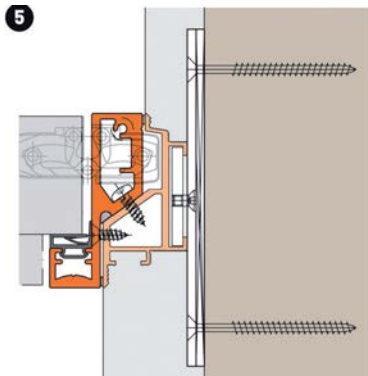


4. Flush with the fold, conventional opening



Solid wall
(Masonry, concrete)
and lightweight wall

5. Installation in the reveal



6. Installation in the reveal

